

# 3D Viewer Settings

These settings affect the way SpinFire Ultimate displays your 3D images. You can specify how graphics behave, a color palette, special effects, how the model is rendered, animation speed, view and viewport features, measurement units and precision, and fonts and font colors. Simply select desired default 3D Viewer settings, then click the **Apply Settings** button. If you change your mind, click the **Discard Changes** or **Reset to Default** button.

Click on a link below to learn more about selecting 3D Viewer default settings:

**Zoom-fit on Each Import** - When a file is opened, SpinFire Ultimate automatically shows a close-up view of the document contents while still fitting the contents entirely in the view. When you click on a link below to learn more about selecting 3D Viewer default settings:

**Points Visible on Picking** - Makes vertex points visible as red dots during any command that requires a vertex to be selected.

**Enable 3D Auto-Spinning** - Causes a 3D model to spin continuously when rendered.

**Enable Gradient Background** - The screen background is specified as a gradient.

**Point Size** - The size of a point in pixels.

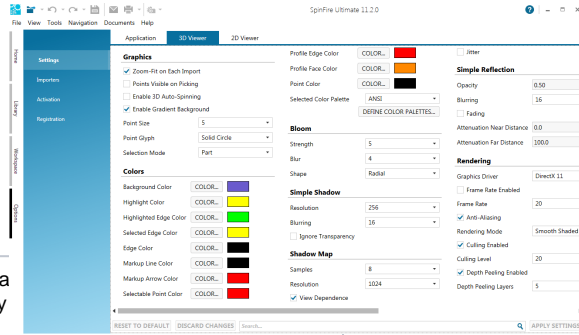
**Point Glyph** - The shape of the point.

Values are Cross, Circle, Solid Circle, and Splat.

**Selection Mode** - The default object selection mode.

Values are Part and Surface.

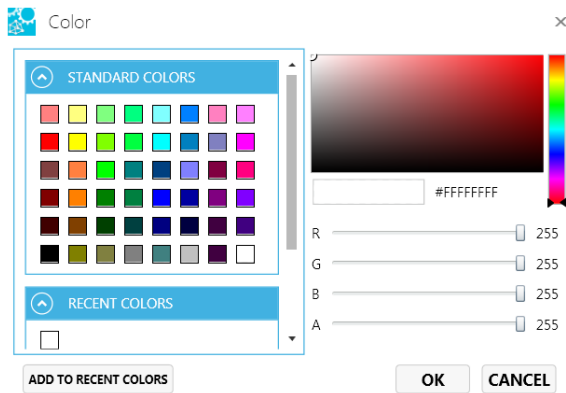
SpinFire Ultimate .ACT3D files contain background information; default background settings do not apply to these files.



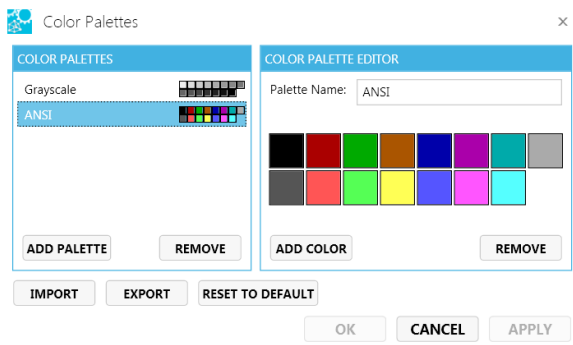
## Related Topics

- [Options](#)
- [2D Viewer Settings](#)
- [Controlling the View](#)

**Background, Highlight, Highlighted Edge, Selected Edge, Edge, Grid Line, Markup Line, Markup Arrow, Selectable Point, Profile Edge, Profile Face, Point, Ruler Background, and Ruler Text Color** colors - Click the respective **Color...** button to choose a default color for scene elements.



**Selected Color Palette** - From the drop-down menu, select a color palette for your scene. Also, you can create a new palette — or modify an existing one — by clicking the **Define Color Palettes...** button.



## Ignore .ACT3D and .3D Background Color and Gradient Values

Use this setting to ignore the background color saved in the .ACT3D or .3D file. It will use the Background Color set here in the 3D Viewer settings instead.

Background Color    
 Ignore .ACT3D and .3D Background Color and Gradient Values

Also known as *glow* or *light bloom*. Bloom is used to reproduce the illusion of extremely bright light overwhelming the eye — the light in the bright background bleeds into the darker areas, such as a figure in a doorway.

**Strength** -The brightness of the bloom.

Values are 1 to 10.

**Blur** - The degree to which the bloom bleeds into darker areas (i.e., edges are softened).

Values are 1 to 8.

**Shape** - Specifies the shape of the bloom.

Values are Star or Radial.

Creates a shadow cast by the model.

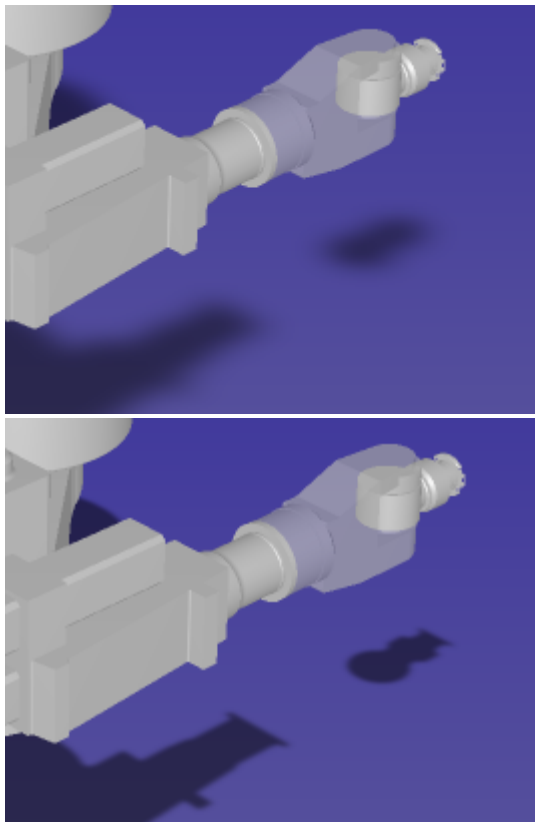
**Resolution** - Determines the sharpness and density of the shadow image.

Values are 2, 4, 8, 16, 32, 64, 128, 256, 512, 1024 ppi.

**Blurring** - The degree to which the shadow edges are blurred.

Values are 2, 4, 8, 16, 32, 64, 128, 256.

**Ignore Transparency** - If selected, any transparent parts of the object will cast a shadow.



Depending on the light source, SpinFire Ultimate will determine whether or not a pixel is in shadow and store this information as a numerical value in a *shadow map*. The resulting shadows have jagged edges. In order to smooth the edges, random samples of values stored in the shadow map are averaged, which produces a shadow factor that can be used to smooth the border between light and shadow.

**Samples** - The greater the number of samples, the smoother the shadow edges, but the scene will take longer to render.

Values are 2, 4, 8, 16, 32, 64, 128, 256.

**Resolution** - The accuracy of the shadow map is limited by its resolution. Greater resolution uses more memory and can take longer to generate.

Values are 16, 32, 64, 128, 256, 512, 1024, 2048, 4096, 8192, 16384, 32768, 65536, 131072, 262144, 524288.

**View Dependence** - When enabled, the view is scaled and refreshed with the camera, ensuring consistent visuals in 3D View.

**Jitter** - When jitter is enabled, a randomizing function is applied to the process of determining where to take shadow map samples. Jitter may improve a scene visually by softening jagged shadow edges.

Creates a reflection of the model.

**Opacity** - The degree of nontransparency.

**Blurring** - The degree to which the reflection edges are blurred.

**Fading** - An gradient effect causing the reflection to appear as though it fades into the background.

**Attenuation Near Distance** - The distance between the light source and the model where the reflection begins to fade.

**Attenuation Far Distance** - The distance between light source and the model where the reflection is completely faded.

**Graphics Driver** - Select a graphics driver from the drop-down list. SpinFire Ultimate supports OpenGL, OpenGL 2, DirectX 9, and DirectX 11.

**Frame Rate Enabled** - Use the Frame Rate field when checked.

**Frame Rate** - The number of frames of an animation displayed every second. The higher the frame rate, the smoother the animation will appear, but processing power and system bandwidth requirements increase as well.

Values are 0 to 30.

**Anti-Aliasing** - By default, SpinFire Ultimate will smooth out any jagged diagonal or curved lines. Also known as *dithering*. Clear the checkbox to disable.

**Rendering Mode** - Wireframe, Hidden Lines Removed, Triangle Mesh, Flat Shaded, Smooth Shaded, Smooth with Edges, Reflective, Metallic, Surface Analysis.

**Culling Enabled** - Enables culling when set. Used with the Culling Level setting.

**Culling Level** - This is the size in pixels which objects are drawn. Smaller the objects drawn with larger the culling levels may be reduced to not appearing on screen. Larger culling levels may improve drawing performance.

Default value: 20.

**Depth Peeling Enabled** - Enables depth peeling when set. Used with the Depth Peeling Layers setting.

**Depth Peeling Layers** - Indicates the number of layers of overlapping transparency used when drawing objects. The smaller the value, the better the performance.

Default value: 5.

**Static Model Enabled** - Enable to boost performance with pan/zoom/rotate. Usage may negatively effect other functionality.

**Front Facing PMI** - Enable to have PMI text always front facing despite flipping and rotating of the model.

**Front Rendered PMI** - Enable for PMI to always be in front.

**Display Grid** - When enabled, Front, Back, Top, Bottom, Right, or Left standard views include a background grid.

**Camera Projection** - Determines how objects are viewed. In *perspective mode*, grid lines converge to a vanishing point. This provides the illusion of depth in the viewport; objects farther away look smaller. In *parallel mode*, all the grid lines are parallel to each other, and identical objects look the same size, regardless of where they are in the view.

Values are Perspective Mode, Parallel Mode.

**Projection** - Determines the orthogonal projection method used when the model is displayed in 4 Viewport and 3+1 viewport modes.

Values are 1st Angle (4 Viewport: Left, Top, front, isometric; 3+1 Viewport: Bottom, Front, Top, lg isometric) 3rd Angle (4 Viewport: Right, Bottom, Front, isometric; 3+1 Viewport: Top, Front, Bottom, lg isometric).

**Axis Triad Enabled** - Specifies whether or not the coordinate system triad (frame) is displayed in the scene.

**Axis Triad Location** - Specifies where in the scene the coordinated system triad is located.

Values are Top Right, Top Left, Bottom Right, Bottom Left.

**Navigation Cube Enabled** - Specifies whether or not the navigation cube (point-of-view quick reference) is displayed in the scene.

**Navigation Cube Location** - Specifies where in the scene the navigation cube is located.

Values are Top Right, Top Left, Bottom Right, Bottom Left.

**Decimal Places** - Determines the default number of decimal places that are displayed in measurement labels.

Values are 0 to 10.

**Length Units** - Determines the default unit of measurement for Dimension markups. Units of measurement for *individual* Dimension markups can be changed from the right-click menu. See [Measuring and Annotating 2D Documents](#) and [Measuring and Annotating a 3D Model](#) for details.

Values are Kilometers, Meters, Centimeters, Millimeters, Micrometers, Nanometers, Miles, Feet, Inches, Mills, Micro-Inches.

**Angular Unit** - Specifies the default unit of measurement for angles.

Values are Deg-Min-Sec, Radians, Degrees, Grads.

**Weight Unit** - Specifies the default unit of measurement for weight.

Values are Ounces, Megatonnes, Kilotonnes, Tonnes, Kilograms, Hectograms, Decagrams, Grams, Decigrams, Centigrams, Milligrams, Nanograms, Short Tons, Pounds, Long Tons.

**Selected Material** - Click to choose a construction material from the drop-down list. If you add a material to the materials list (see Define Materials...), it will also appear on the list.

Default materials are ABS, Acrylic, Aluminum, Beryllium, Brass, Bronze, Bronze, Cast Iron, Chromium, Cobalt, Copper, Gray Iron, Indium, Iron, Lead, Magnesium, Molybdenum, Nickel, Nylon, Platinum, Polycarbonate, Polyethylene, Polypropylene, Polystyrene, Polyvinyl Chloride, Stainless Steel 304, Stainless Steel 316, Stainless Steel 321, Steel, Tin, Titanium, Zinc.

**Define Materials...** - Click to add a definition to the materials list.

**Verify Volume** - When enabled, the model is verified to be a closed solid when its volume is calculated.

**Ruler Enabled** - When enabled, the ruler appears in orthographic views.

**Scale Bar Enabled** - When enabled, the scale bar appears in 3D documents.

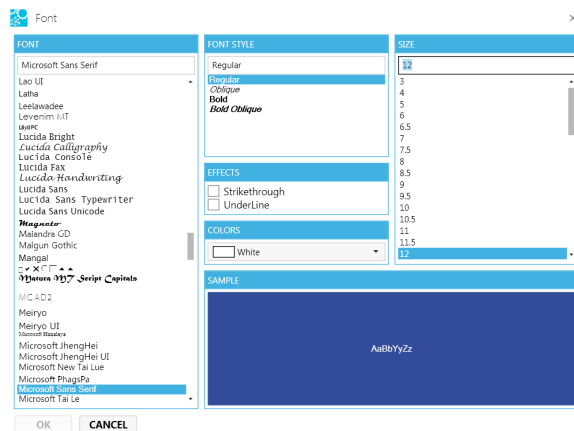
**Scale Bar Location** - Specifies where in the scene the scale bar is located.

**Grid/Ruler Unit** - The default unit for 3D grids/rulers.

**Font** - Click the Font name (default is Microsoft Sans Serif 12 pt) to select font, font style, size, effects, and color for markup and measurement labels.

**Background** - Click the **Color...** button to select the background color for markup and measurement labels.

**Fonts** and background color for *individual* markups and measurements can be changed from the toolbar.



Specifies SpinFire Ultimate ACT3D file export characteristics.

**B-Rep Compression** - Set the level of boundary representation (B-Rep) data compression.

Values are: None, Low, Medium, High.

**Include B-Rep** - When enabled, B-Rep information is preserved when file is saved. The B-Rep provides greater accuracy when measuring volumes and curved surfaces, but increases file size.

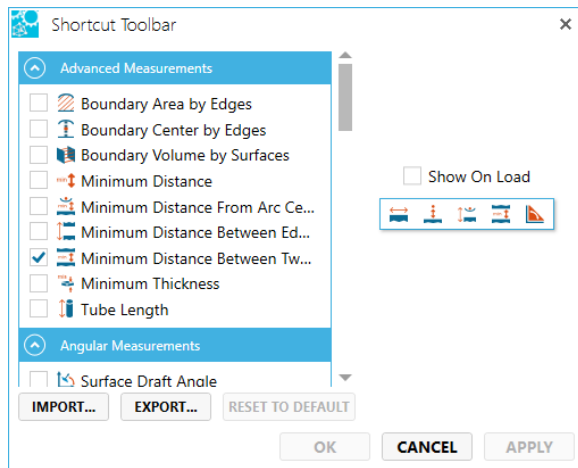
**Tessellation Compression** - When enabled, tessellation is compressed when the file is saved, which results in a smaller file size (but accuracy is diminished).

**3D Preview** - When enabled, 3D preview data is included when the file is saved.

**B-Rep Compression** - Set the level of boundary representation (B-Rep) data compression.

Values are: None, Low, Medium, High.

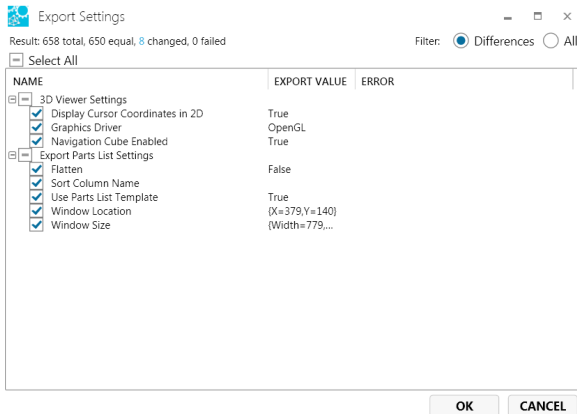
**Define Shortcut Toolbar** - Add, edit, delete to the shortcut toolbar to increase personal productivity. Export and import features are available to share a shortcut toolbar configuration with colleagues or to yourself on a different system(s).



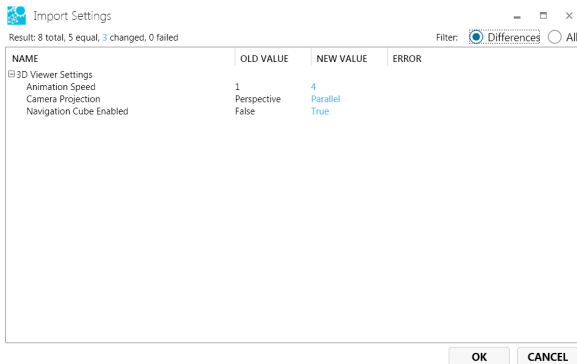
**Load Surfaces on Demand** - When enabled, surfaces are not loaded during the opening of a 3D model file. Surfaces are brought in on demand (i.e. - the assembly tree is expanded to those areas). This is disabled by default.

You can save your current [Application](#), [3D Viewer](#), and [2D Viewer](#) settings to an XML file. Another user can then load this XML file to use the same Application, 2D, and 3D Viewer settings in his/her SpinFire Ultimate environment. This can be useful if a file requires specific settings in order to be viewed properly or if an organization needs to ensure that all users are using the same settings.

1. From the menu bar, select **Tools > Export Settings...**
2. On the Export Settings dialog box, select/clear checkboxes corresponding to the settings you would like to save.
3. Click **OK** to open the Windows Save As dialog box. The settings file name extension is *.config*.



1. From the menu bar, select **Tools > Import Settings....**
2. Navigate to and select the file, then click the **Open** button (or simply double-click the file name). The settings file name extension is *.config*.
3. The Import Settings dialog box appears, which lists existing and new setting values side by side. If the new settings are acceptable, click the **OK** button. (Note the Filter radio buttons: You can choose to view only the differences between the existing and new settings to more easily compare the values.)



1. From the Menu toolbar, select **Tools > Reset Settings....**
2. The Reset Settings dialog box appears, which lists existing and original default setting values side by side. Click the **OK** button to restore the original defaults. (Note the Filter radio buttons: You can choose to view only the differences between the existing and new settings to more easily compare values.)

